

## Features

### Channel

soccer

Everything soccer around you.

- Channels are feeds for a certain topic from the area around the user
- Users can create and subscribe to channels
- Users can create posts in channels

### Posts

+ 1  
Anyone around to play pick-up this weekend?

- Posts can be upvoted or downvoted by users
- The feeds are comprised of posts
- The users can upload images in the description of the posts

### Comments

pranav@gmail.com

I have a group of friends I play with in LSC quad at Trinity. You can join us at 5:00 pm on Saturday.

- The feed comprises of posts based on the user's location and interests
- When there is activity in a channel that the user is subscribed to, the user subscribed are notified through the feed

### Moderators

- Every channel can be assigned moderators
- Moderators are able to remove comments, posts and report users

## Challenges

- Deciding on the size of locality
- How to implement moderation in location based app?
- Activity in a post that the user is no longer eligible for but was at a certain point

## Motivation

The application connects the users to their community by delivering only local content. It does this by filtering the user's content based on user's location and interests. Other social media applications are inundated with posts from our friends from all over the world due to which it becomes difficult to keep up with what is going on in the community through these applications.

## Feed

+ 0  
Construction at New Britain Street and Broad Street on May 11th.  
in: Community Updates  
by: john@gmail.com

0 comments

+ 1  
Trinity College Senior Poster Presentation - Open to all - Trinity Field House, Ferris  
in: Computer Science  
by: pranav@gmail.com

0 comments

+ 2  
Hartford FIFA Tournament - RESET Lounge - \$10 entry  
in: FIFA  
by: soham@gmail.com

1 comments

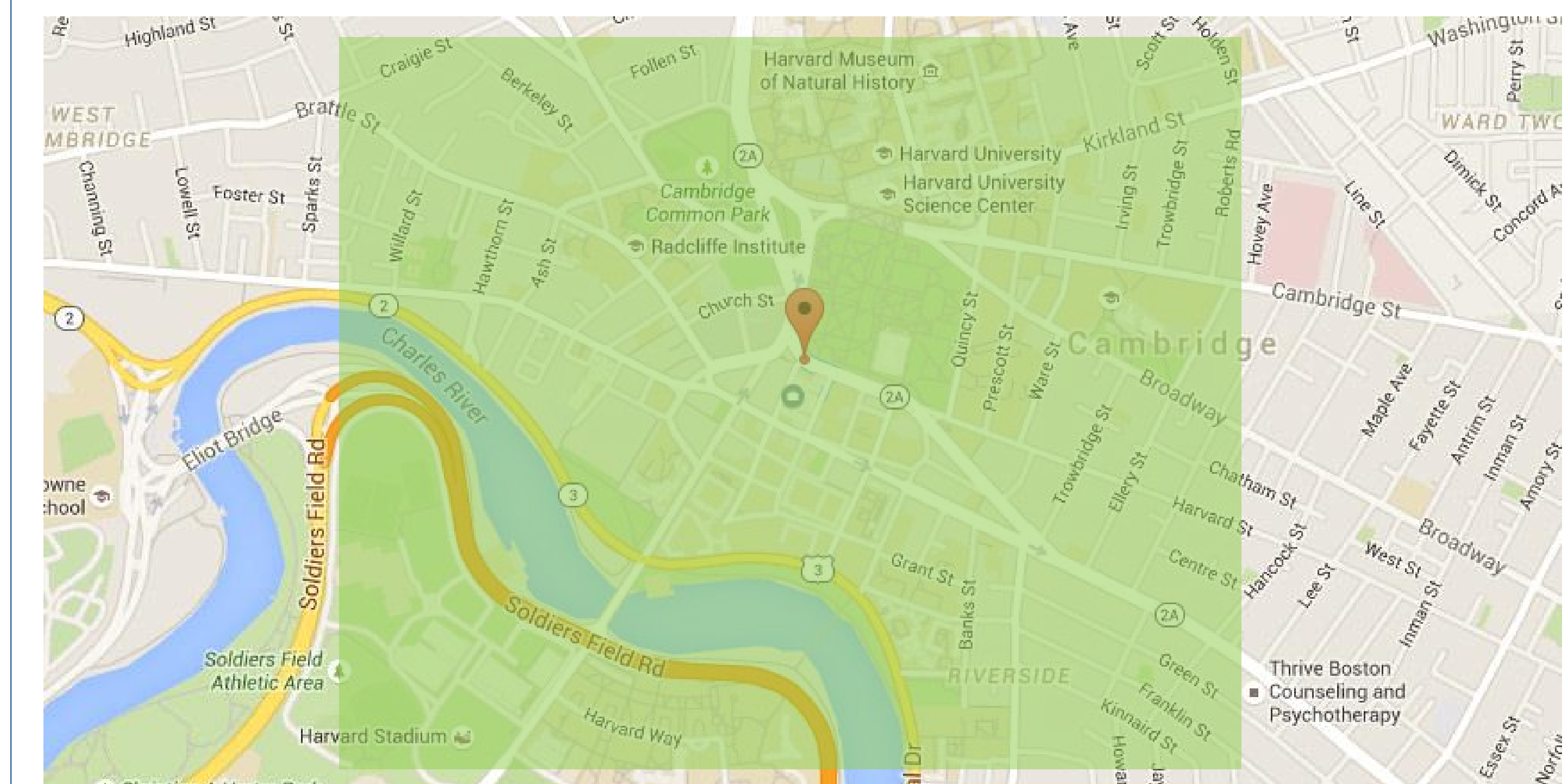
- The feed comprises of posts based on the user's location and interests
- When there is activity in a channel that the user is subscribed to, the user subscribed are notified through the feed

## Further Improvements

- Save a location functionality so that the users can save a location from which the user can get content regardless of his/her current location
- Ability to favorite posts and have them archived somewhere accessible
- Ability to share the content to social media

## Implementation

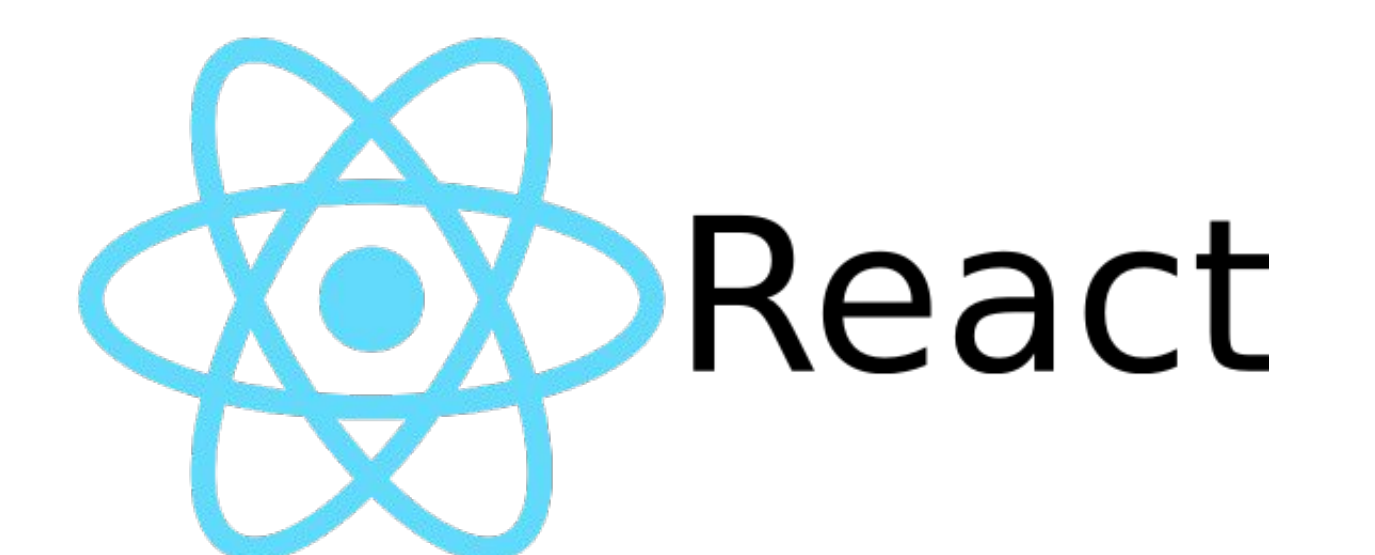
- Used Meteor's accounts-password package was used to manage user accounts
- Used Bootstrap for front end structuring
- Used MongoDB as the database



- Used google maps to update the user's location when they log in
- When a user submits any kind of content, the content has a location stamp attached to it. It is the location of the user submitting the content. The location stamp is used to verify the eligibility of the content for each user
- The content is selected for the user using a square that is formed with the location of the user as the centroid
- Used the user's latitude and longitude to set the range for which the content is accepted
- The content is further filtered and added based on the user's subscribed channels

## Technology

METEOR 1.4.4



## Acknowledgement

This project was supported by

- Trinity College Computer Science Department