

Seabury Classrooms

Presentation

October 29, 2007

Today's Agenda

- Go over details for the Seabury classrooms
 - Seating
 - Technology
 - Furniture

Introductions

- Tyler Smith, Kent McCoy – Smith Edwards Architects
- Michael Kerwin– CCR Pyramid, technology consultants

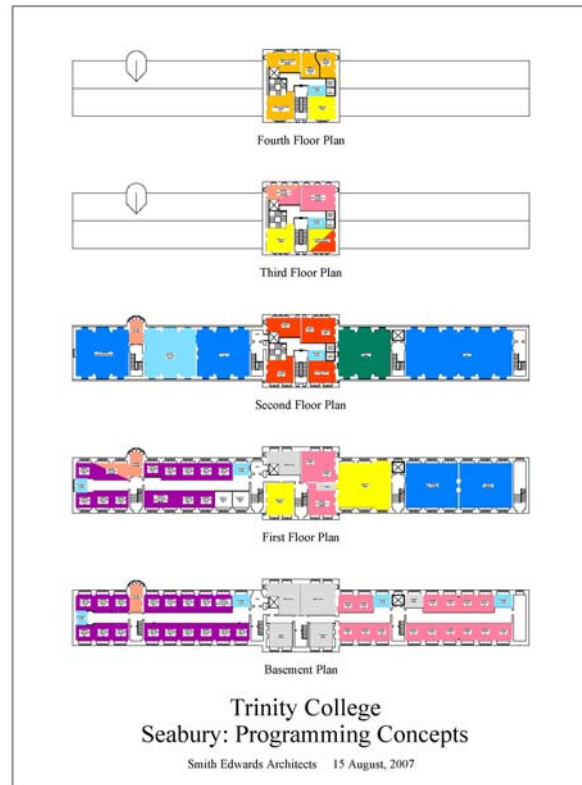
Brief History

- Roofs identified for repair
- Decision to renovate interior of Seabury
 - approved by Board of Trustees in May 2006
- Programming begun in June 2006
 - Small working group
 - Faculty – Joe Byrne, Dario DelPuppo (replaced by Luis Figueroa), Adam Grossberg
 - Staff – Alison Draper, Tom Fusciello, Sally Katz, John Langeland, Paula Russo
 - Accelerated schedule necessary to meet target completion date
 - CCR Pyramid retained as technology consultants

Critical Considerations

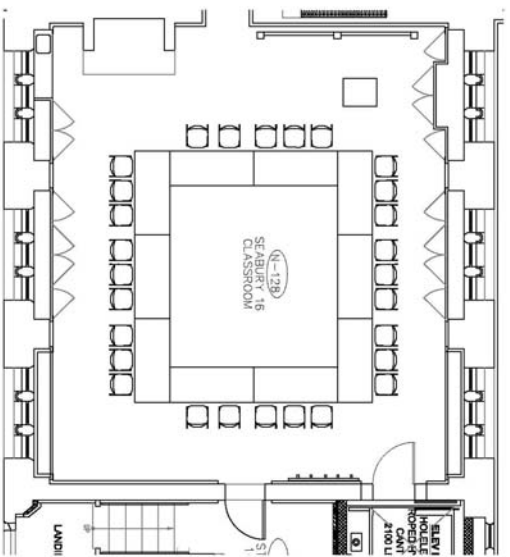
- Number of offices limited to former locations by Board directive
- Structural and mechanical considerations further limited available space
- Need to create social space in building
- Historic nature of building limited classroom design
- Desire to create diverse set of classrooms

Seabury Floor plan



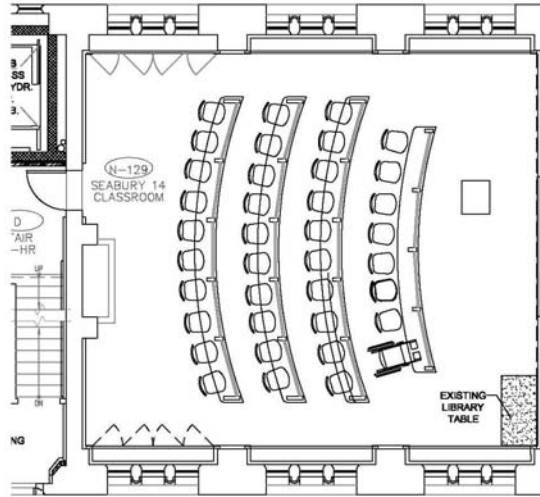
Classroom Details – Seabury 16

- Seminar style classroom (28 seats)
- Moveable seats and tables
- 2 LCD Projectors mounted at rear of the room
- 2 motorized projection screens mounted at the front of the room
- 50” plasma screen at the rear of the room for breakout collaborative sessions.
- Instructor’s station (lectern) mounted at the front of the classroom
 - touch screen AV control panel
 - installed computer workstation
 - laptop connections
 - document camera on slide-out drawer
 - dvd/vhs player
 - CATV
 - lighting and window shade control
 - Sympodium interactive pen display
- Stereo speakers and sound system
- Motorized room-darkening shades



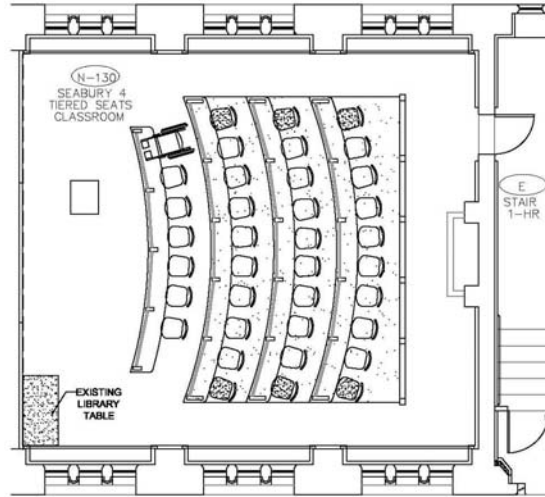
Classroom Details – Seabury 14

- Lecture style classroom (38 seats)
- Moveable seats, fixed tables
- 2 LCD Projectors mounted at rear of the room
- 2 motorized projection screens mounted at the front of the room
- 50” plasma screen at the rear of the room for videoconferencing and breakout collaborative sessions.
- Instructor’s station (lectern) mounted at the front of the classroom
 - touch screen AV control panel
 - installed computer workstation
 - laptop connections
 - document camera on slide-out drawer
 - dvd/vhs player
 - CATV
 - lighting and window shade control
 - Sympodium interactive pen display
- Stereo speakers and sound system
- Motorized room-darkening shades
- Full videoconferencing system



Classroom Details – Seabury 4

- Lecture style classroom (38 seats)
- Tiered seats, fixed tables
- 2 LCD Projectors mounted at rear of the room
- 2 motorized projection screens mounted at the front of the room
- Instructor's station (lectern) mounted at the front of the classroom
 - touch screen AV control panel
 - installed computer workstation
 - laptop connections
 - document camera on slide-out drawer
 - dvd/vhs player
 - CATV
 - lighting and window shade control
 - Sympodium interactive pen display
- Stereo speakers and sound system
- Motorized room-darkening shades

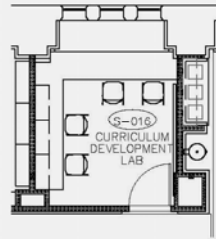


Classroom Details

Developmental Lab

- Small room for faculty course development
- CATV enabled
- Network connectivity

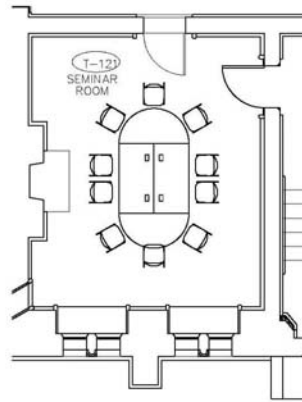
Classroom Details Developmental Lab



Classroom Details

RM T-121

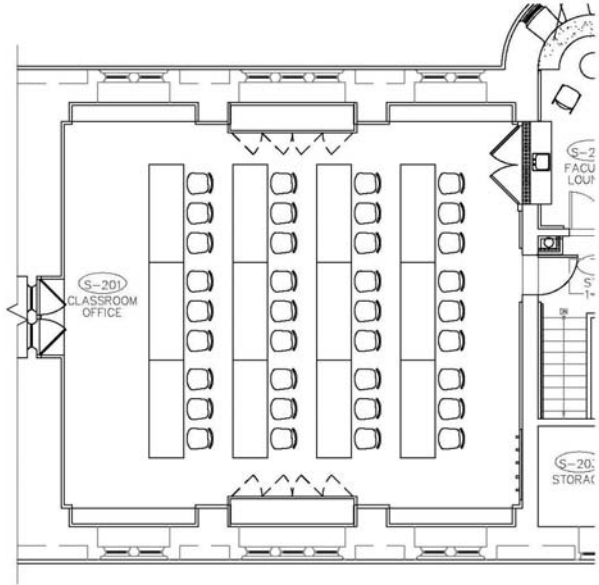
- Seminar room
- Moveable seats and tables for 10-12 students
- 2 60” plasma screens at opposite corners of the room for display and collaboration, with side speakers and touch sensitive overlay
- AV control panel laptop connections
- dvd/vhs player
- CATV connectivity



Classroom Details

RM S-201

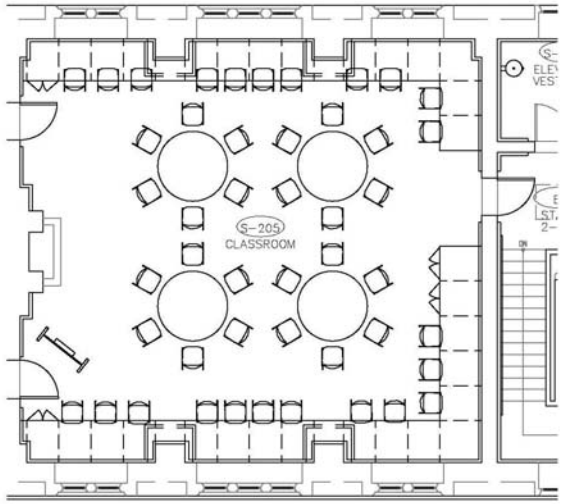
- Seminar style classroom (36 seats)
- Moveable seats and tables
- 2 LCD Projectors mounted at rear of the room
- 2 motorized projection screens (HDTV aspect ratio) mounted at the front of the room
- 50” plasma screen at the rear of the room for breakout collaborative sessions
- Instructor’s station (lectern) mounted at the front of the classroom
 - touch screen AV control panel
 - installed computer workstation
 - laptop connections
 - document camera on slide-out drawer
 - dvd/vhs player
 - CATV
 - lighting and window shade control
 - Symposium interactive pen display
- Stereo speakers and sound system
- Motorized room-darkening shades



Classroom Details

RM S-205

- Computer Room / Language Lab (23 fixed seats plus 24 movable seats at tables)
Lab computer workstations on perimeter of the classroom
- Moveable seating and tables in the center
- 1 LCD Projector mounted at rear of the room
- 1 motorized projection screens (HDTV aspect ratio) mounted at the front of the room
- Instructor's station (lectern) mounted at the front of the classroom
 - touch screen AV control panel
 - installed computer workstation
 - laptop connections
 - document camera on slide-out drawer
 - dvd/vhs player
 - CATV
 - lighting and window shade control
 - Sympodium interactive pen display
- Stereo speakers and sound system
- Motorized room-darkening shades



Details - Student Multi-use Space

RM S-204

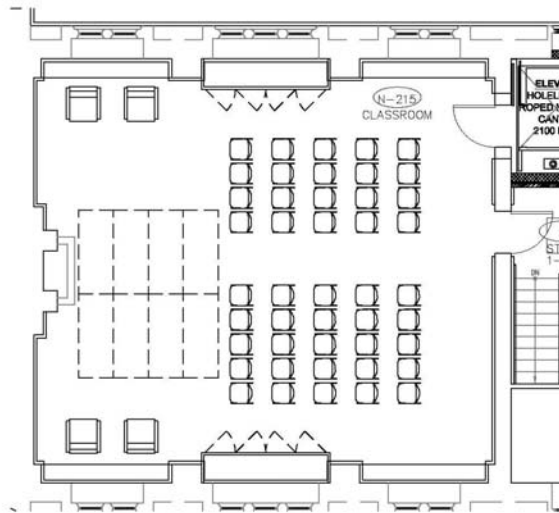
- Multi use space with 24 hour access for students
- Moveable seats, and tables
- 1 LCD Projector mounted at rear of the room
- 1 motorized projection screen (HDTV aspect ratio) mounted at the front of the room
- 2 50” plasma screens at the rear sides of the room for collaborative sessions
- Stereo speakers and sound system
- Motorized room-darkening shades



Details

Reception/Conference Room

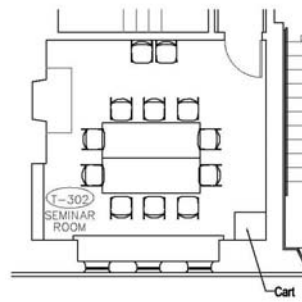
- Flexible space
- Folding chairs and folding tables for conference style seating
- 1 LCD Projector mounted at rear of the room
- 1 motorized projection screen (HDTV aspect ratio) mounted at the front of the room
- Stereo speakers and sound system
- Motorized room-darkening shades



Classroom Details

RM T-302, T-308, T-402

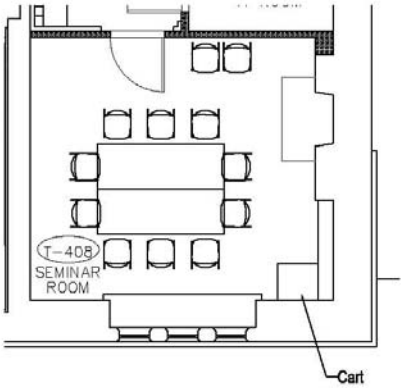
- Each seats 12 students
- Small seminar room with moveable seats and tables.
- 1 60" plasma screen with side speakers and touch sensitive overlay
- AV control panel laptop connections
- dvd/vhs player
- CATV



Classroom Details

RM T-408

- Small seminar room
- Moveable seats and tables
- 1 60” plasma screen



Comments or Questions